

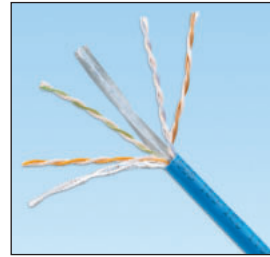
# NetKey™ Category 6 UTP Copper Cable

# PANDUIT™

## DATA SHEET

## specifications

Category 6 UTP cable meets ANSI/TIA/EIA-568-B.2-1 and IEC 61156-5 Category 6 component standards. The conductors are 24 AWG copper insulated with HDPE polymer. The copper conductors are twisted in pairs, separated by a cross divider and covered by a low smoke zero halogen or PVC jacket.



## technical information

<b>Electrical performance:</b>	Certified performance in a 4-conductor configuration up to 100 meters, meets ANSI/TIA/EIA-568-B.2-1, ISO 11801 2nd Edition Class E and IEC 61156-5 Category 6 channel and component requirements
<b>Conductor/insulator:</b>	24 AWG solid copper insulated with HPDE polymer
<b>Flame rating:</b>	LSZH – IEC 60332-1, 60754-2, 61034 PVC (CM) – UL 1685
<b>Installation tension:</b>	110N (25 lbf) maximum
<b>Temperature rating:</b>	0° to 50°C (32° to 122°F) during installation -20° to 75°C (14° to 167°F) during operation
<b>Cable jacket:</b>	LSZH – Low Smoke Zero Halogen PVC (CM) – PVC
<b>Cable diameter:</b>	5.9mm (0.233 in.) nominal
<b>Cable weight:</b>	LSZH – 12.5 kg/305m (27 lbs./1000 ft.) PVC (CM) – 12 kg/305m (26 lbs./1000 ft.)
<b>Packaging:</b>	305m (1000 ft.) easy-pay-out box LSZH – 14.5 kg/305m (30 lbs./1000 ft.) PVC (CM) – 14 kg/305m (29 lbs./1000 ft.) Packaged tested to ISTA procedure 1A

## key features and benefits

<b>Third party tested</b>	Cable has been tested as part of the NetKey™ Category 6 UTP Copper Cabling System by an independent laboratory and complies with the electrical channel requirements of the following standard: ANSI/TIA/EIA-568-B.2-1 Category 6 standard
<b>Descending length cable markings</b>	Easy identification of remaining cable reduces installation time and cable scrap
<b>Cross divider</b>	Separates twisted pairs for robust cable performance
<b>Easy payout box</b>	Ensures proper performance and provides quick installation

## applications

Applications include:

- Ethernet 10BASE-T, 100BASE-T (Fast Ethernet), and 1000BASE-T (Gigabit Ethernet)
- 155 Mb/s ATM, 622 Mb/s ATM, 1.2 Gb/s ATM
- Token ring 4/16

### NetKey™ Network Components

#### NetKey™ UTP Copper Cable\*

<b>LSZH:</b>	NUL6C04BU-CE
<b>CM:</b>	NUC6C04BU-CE

#### NetKey™ Category 6 UTP Jack Module

<b>Punchdown:</b>	NK688MIW**
-------------------	------------

#### NetKey™ Category 6 UTP Patch Cords – CM

<b>Foot lengths:</b>	NK6PC3^Y
<b>Meter lengths:</b>	NK6PC1M^Y

#### NetKey™ Category 6 Punchdown Patch Panels

<b>12-port:</b>	NK6PPG12WY
<b>24-port, 1 RU:</b>	NK6PPG24Y
<b>48-port, 2 RU:</b>	NK6PPG48Y

#### NetKey™ Flush Mount Modular Patch Panels

<b>Angled, 24-port, 1 RU:</b>	NKPPA24FMY
<b>Angled, 48-port, 2 RU:</b>	NKPPA48FMY
<b>Flat, 24-port, 1 RU:</b>	NKPP24FMY
<b>Flat, 48-port, 2 RU:</b>	NKPP48FMY

#### Termination and Cable Prep Tools

<b>JackRapid™ Termination Tool</b>	JR-PAN-2
<b>Conductor stripping tool:</b>	CWST
<b>Conductor stripping tool:</b>	CJAST

\*Standard cable colour is BU (Blue). Pallets are configured in 2 layers, 7 cartons per layer, total of 14 cartons per pallet.

\*\*For standard colours other than Off White (IW), replace suffix with EI (Electrical Ivory), IG (International Gray), WH (White), BL (Black), BU (Blue), RD (Red), YL (Yellow), GR (Green), or VL (Violet). Add -Q to end of part number for 25 pack convenience package.

^For standard foot lengths other than 3 feet, replace the 3 in the part number with 5, 7, 10, 14 or 20. For standard colours other than Off White, add suffix BU (Blue), RD (Red), YL (Yellow) or GR (Green) before the Y at the end of the part number. For example, the part number for a blue, Category 6, 5-foot patch cord is NK6PC5BUY.

^^For standard metre lengths other than 1 metre, replace the 1 in the part number with 2, 3, 4 or 5. For standard colors others than Off White, add suffix BU (Blue), RD (Red), YL (Yellow) or GR (Green) before Y at the end of the part number. For example, the part number for a blue, Category 6, 5-metre patch cord is NK6PC5MBUY.

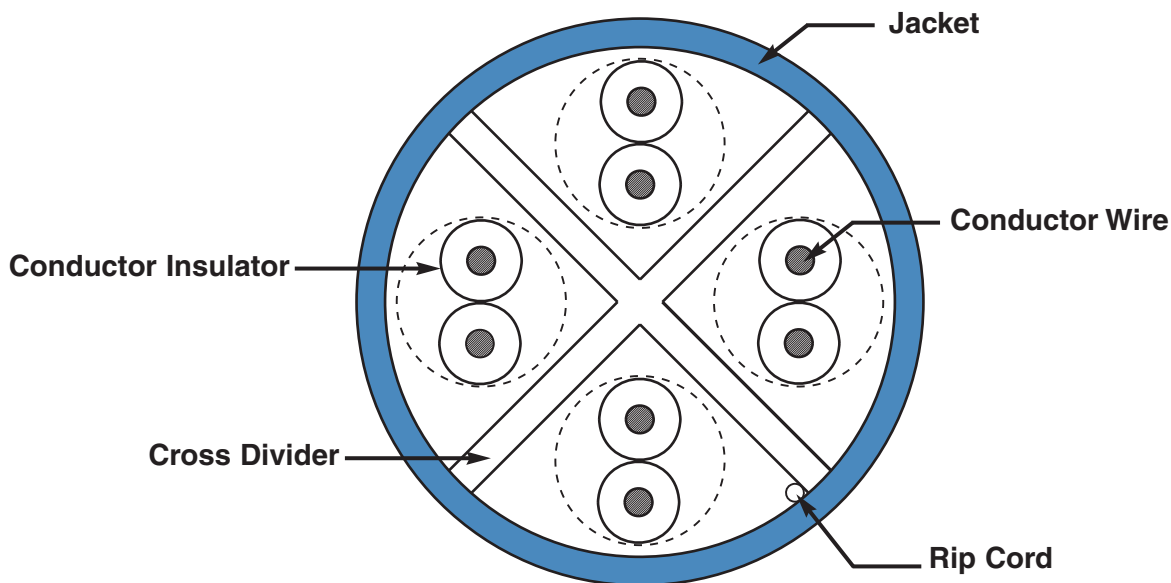
Fluke JackRapid™ Termination Tool available through distribution. To locate the local office, visit [www.flukenetworks.com/contact](http://www.flukenetworks.com/contact). JackRapid™ is a trademark of Fluke Networks.

# NetKey™ Category 6 UTP Copper Cable

## Additional Specifications

Mechanical Test	
<b>Ultimate Breaking Strength</b>	>400 N (90 lbf)
<b>Minimum Bend Radius</b>	4 x cable diameter
Electrical Test	
<b>DC Resistance</b>	<9.38 Ohm per 100m (328 ft.)
<b>DC Resistance Unbalance</b>	<5%
<b>Mutual Capacitance</b>	<5.6 nF per 100m (328 ft.)
<b>Capacitance Unbalance</b>	<330 pF per 100m (328 ft.)
<b>Characteristic Impedance</b>	100 Ohm +/-15% up to 100 MHz
<b>Nominal Velocity of Propagation (NVP)</b>	65%

## Cable Construction



### WORLDWIDE SUBSIDIARIES AND SALES OFFICES

Panduit CANADA  
Markham, Ontario  
cs-cdn@panduit.com  
Phone: 800.777.3300

Panduit EUROPE LTD.  
London, UK  
cs-emea@panduit.com  
Phone: 44.20.8601.7200

Panduit SINGAPORE PTE. LTD.  
Republic of Singapore  
cs-ap@panduit.com  
Phone: 65.6305.7575

Panduit JAPAN  
Tokyo, Japan  
cs-japan@panduit.com  
Phone: 81.3.6863.6000

Panduit LATIN AMERICA  
Jalisco, Mexico  
cs-la@panduit.com  
Phone: 52.333.777.6000

Panduit AUSTRALIA PTY. LTD.  
Victoria, Australia  
cs-aus@panduit.com  
Phone: 61.3.9794.9020

For a copy of Panduit product warranties, log on to [www.panduit.com/warranty](http://www.panduit.com/warranty)

For more information

Visit us at [www.panduit.com](http://www.panduit.com)

Contact Customer Service by email:  
[cs-emea@panduit.com](mailto:cs-emea@panduit.com)

**PANDUIT™**

© 2009 Panduit Corp.  
ALL RIGHTS RESERVED.  
WW-NKDS13-GB  
6/2009