

Rittal – The System.

Faster – better – everywhere.

TS Installation Bracket for L rails in TS, 482.6 mm (19") – DK 7827.480

Date : Mar 19, 2018

ENCLOSURES

POWER DISTRIBUTION

CLIMATE CONTROL

IT INFRASTRUCTURE

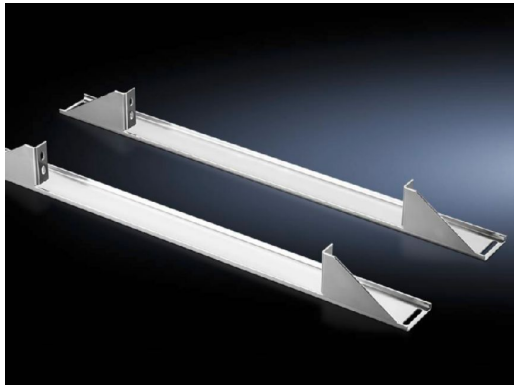
SOFTWARE & SERVICES

FRIEDHELM LOH GROUP



TS Installation Bracket for L rails in TS, 482.6 mm (19") – DK 7827.480

created: 19.03.2018 build on www.rittal.com/us-en



Product description	
Version:	Installation position, center
Description:	The installation bracket is screw-fastened in the enclosure width on the housing frame. The profile rail is fastened to the bracket at the top and bottom. For partial enclosure configuration the installation brackets can be fastened to the TS system chassis, 17 x 73 mm, on the outer mounting level of the enclosure frame.
Benefits:	The brackets ensure optimum clearance at the sides for cable routing Depth-variable attachment possible using the attachment slots Suitable for 19" partial expansion
Applications:	For upgrading existing TS applications
Material:	Carbon steel
Surface finish:	Zinc-plated
Supply includes:	Assembly components
Product features	
Suitable for:	Enclosure type: TS Width: 800 mm (31 ")
Packaging unit:	2 pc(s).
Weight/packaging	3.58 kg (7.9 lb.)

unit:	
EAN:	4028177302631
Customs tariff number:	73182900
ETIM 6.0:	EC002625
ETIM 5.0:	EC002625
eCl@ss 8.0/8.1:	27189234
eCl@ss 7.0/7.1:	27180907
eCl@ss 6.0/6.1:	27180907
eCl@ss 5.1/5.1.4:	27182504
Product description (long):	DK-TS Einbauwinkel, For L-shaped mounting angles into TS, 482.6 mm (19"), For W: 800 mm